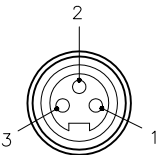

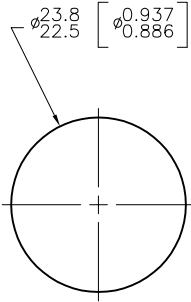
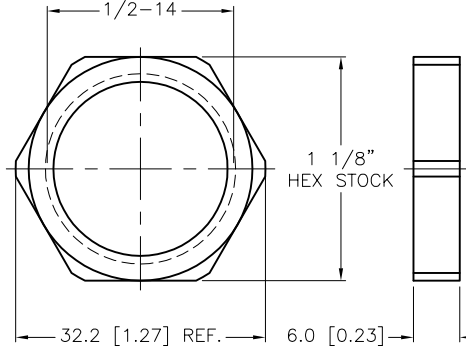
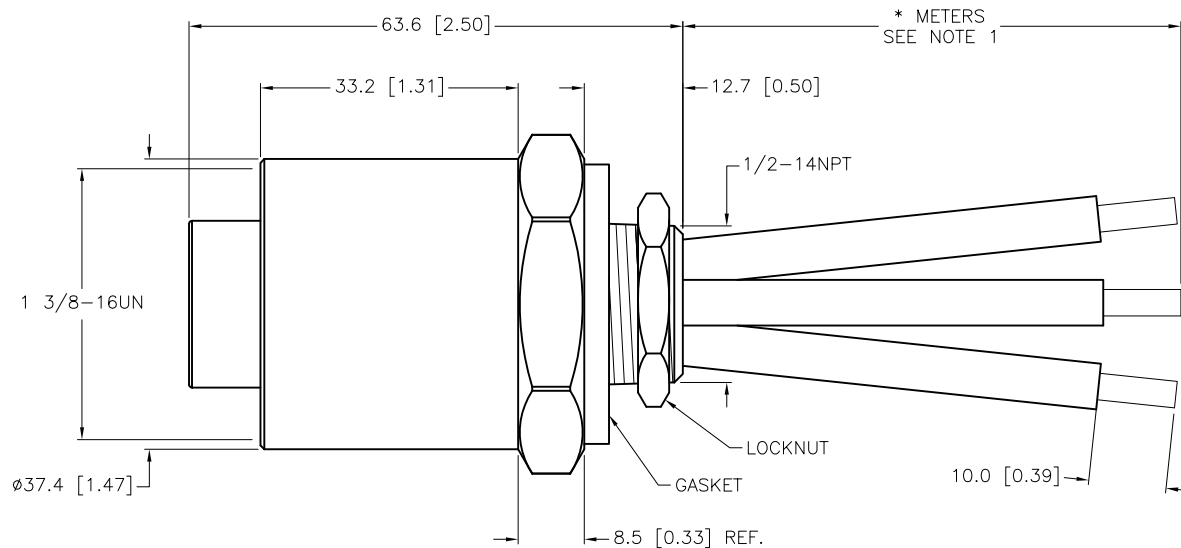
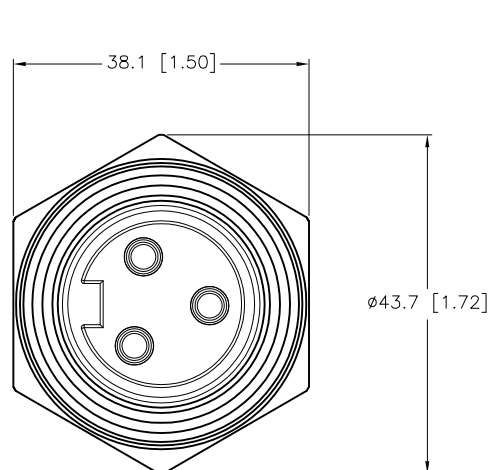


FEMALE END VIEW	PANEL CUTOUT	LOCKNUT	SPECIFICATIONS	
 <p>1 = BLACK 2 = GREEN 3 = WHITE</p> 			CONTACT CARRIER MATERIAL	PVC
			CONTACT MATERIAL/PLATING	BRASS or COPPER/GOLD
			HOUSING MATERIAL/FINISH	STAINLESS STEEL/PASSIVATED
			GASKET MATERIAL	NITRILE (BUNA-N)
			RATED CURRENT [A]	30 A
			RATED VOLTAGE [V]	600 V
			CONDUCTOR INSULATION MATERIAL	PVC
			NUMBERS OF CONDUCTORS [AWG]	3x10 AWG
			TEMPERATURE RATING	-40°C to +105°C (-40°F to +221°F)
			PROTECTION CLASS	MEETS NEMA 1,3,4,6P AND IEC IP67, IP68, IP69K
			MAXIMUM PANEL THICKNESS	6.0mm [.236]



CABLE LENGTH	TOLERANCE*
ALL LENGTHS	+ 4% (OR 50mm) OF LENGTH - 0% (OR 0mm) OF LENGTH WHICHEVER IS GREATER
STRIP LENGTH	TOLERANCE*
0-7mm	±0.5mm
8-29mm	±1.0mm
30-49mm	±2.0mm
50-69mm	±3.0mm
70-100mm	±4.0mm
OVER 100mm	±5.0mm
* UNLESS OTHERWISE SPECIFIED	

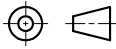
NOTES:

1. "*" INDICATES LEAD LENGTH IN METERS. CONTACT TURCK TO ORDER SPECIFIC LENGTHS.

CAUTION:

RISK OF ELECTRICAL SHOCK
DO NOT DISCONNECT UNDER LOAD

SOURCE DRAWING - FOR REFERENCE ONLY

RELATED DOCUMENTS		3RD ANGLE PROJECTION		<div>THIS DRAWING IS CONFIDENTIAL AND THE PROPERTY OF TURCK INC. USE OF THIS DOCUMENT WITHOUT WRITTEN PERMISSION IS PROHIBITED.</div> <div>TURCK inc <i>High Technology Sensors and Automation Controls</i></div> <div>3000 CAMPUS DRIVE MINNEAPOLIS, MN 55441 1-800-544-7769 (763) 553-7300 (763) 553-0708 fax turck.com</div>	
1. 2. 3. 4.					
MATERIAL		DRFT RDS			
SEE SPECIFICATIONS		APVD		DATE 02/04/09	
FINISH		UNIT OF MEASUREMENT		DESCRIPTION	
SEE SPECIFICATIONS		MILLIMETER [INCH]		GKDFV 30-*M/14.5/NPT	
		DO NOT SCALE THIS DRAWING		SCALE 1=1.0	
				IDENTIFICATION NO.	
				REV	
				B	
				FILE: 777018348	
				SHEET 1 OF 1	

B	DRAWING PROCESSED AS PART OF ECO 39011	KMY	06/12/12	39011
REV	DESCRIPTION	BY	DATE	ECO NO.